



50 Years
1967
2017
LEADING THE FIGHT
TO END HUNGER IN
WASHINGTON STATE



2017
REPORT TO THE COMMUNITY

50 YEARS OF COMMUNITY IMPACT



NORTHWEST HARVEST IS LEADING THE FIGHT FOR HUNGRY PEOPLE STATEWIDE TO HAVE ACCESS TO NUTRITIOUS FOOD WHILE RESPECTING THEIR DIGNITY AND PROMOTING GOOD HEALTH.

OUR VISION IS ENDING HUNGER IN WASHINGTON.

TABLE OF CONTENTS

<i>CEO Letter</i>	4
<i>50 Years of Community Impact</i>	6
<i>Advocacy in Action</i>	10
<i>Programming Highlights</i>	12
<i>Focus on Nutrition</i>	14
<i>Program Innovation</i>	15
<i>Root Out Hunger</i>	16
<i>Making an Impact a World Away</i>	18
<i>Saying Goodbye</i>	20
<i>Looking Forward</i>	21
<i>2017 Facts and Figures</i>	22
<i>Thank You to Our Friends</i>	24
<i>Partner Programs</i>	36
<i>Our Family</i>	38
<i>Board of Directors</i>	39



A BOLD NEW VISION IN FIGHTING HUNGER ACROSS OUR STATE

A MESSAGE FROM CHIEF EXECUTIVE OFFICER THOMAS REYNOLDS

For fifty years, Northwest Harvest has opened its doors to mothers, fathers, children, and elders. Each distributed bag of groceries is accompanied by love, respect, and dignity. For several generations, farmers, producers, volunteers, donors, and staff have banded together and accounted for more than half a billion nutritious meals for our neighbors in need. We are a state that truly cares for its communities.

At the same time food insecurity remains persistently high. Within an increasingly prosperous state economy, inequality is rising dramatically. In a recent report, Seattle was determined to be the third most unequal metro region in the entire country. This has compelled us to step up even further and intensify our role in addressing systemic causes of poverty and hunger—not just in the Seattle area but across our entire state. With one in

eight Washingtonians struggling to put food on the table and one in five children living in food insecure households, Northwest Harvest is setting forth with a new, more comprehensive strategy.

We are asking two critical questions: first, how can we help people who are hungry get better access to healthy, nutritious food? And second, why is it that certain communities remain chronically food insecure—and what can be done about it?

There is a narrative that suggests that hunger could be solved if all the food wasted in the US could be given to the people who are hungry. I'm very skeptical of this simple equation. Given that rates of food insecurity differ based on a multitude of factors (such as geography and ethnicity), my hypothesis is that there are much deeper causes at the root of hunger that our society must identify, expose, and tackle.

This mission calls for boldness, and Northwest Harvest has decided to set a bold goal to cut hunger in half by 2028.

Moving forward into 2018 and beyond, we will continue distributing nutritious foods such as fresh fruits and vegetables, whole grains, and proteins such as salmon, tuna, and chicken all across Washington through our dedicated network of partner food programs. Additionally, Northwest Harvest will operate as a platform for addressing issues such as poverty and inequity as they relate to hunger in Washington. We will also be building strong coalitions and seek new strategic partnerships and allies in the public, private, and nonprofit sectors to best identify root causes of local food insecurity.

Throughout our agency, we are truly energized by this endeavor, and look forward to working with each of you to realize

substantive change for Washington over the next decade.

To quote Nelson Mandela, “It always seems impossible until it’s done.” And Northwest Harvest knows this can be done.

If we begin removing structural barriers that keep people who struggle with hunger from accessing consistent, nutritious food; if we mobilize a broad set of actors to tackle basic core issues that cause food insecurity in our communities; if we bring together our lawmakers to improve policies that provide a more equitable foundation for basic needs; then hunger in Washington can indeed be cut in half.

THOMAS REYNOLDS,
CHIEF EXECUTIVE OFFICER



“It always seems impossible, until it is done.”

—Nelson Mandela

In the spring of 1967, a group of local social activists saw a pressing need in our community. They saw men and women struggling to provide enough food for their families each week. So, they did what activists do—they acted. They gave birth to what became Northwest Harvest.

During these past 50 years, so much of the landscape here in the Northwest has changed—both literally and figuratively. But, one thing has stayed the same—many of our neighbors still struggle with hunger. And Northwest Harvest continues to take action.





In our first 50 years, Northwest Harvest has provided over 500 million meals in Washington through our statewide network of 375 food banks, meal programs, and high-need schools.



Today, we are the leading statewide independent hunger relief agency. We focus on building partnerships in communities all across Washington that allow us to better provide food where it's most needed.

Throughout this time, Northwest Harvest has never wavered from our core principle of freely providing nutritious, culturally-sensitive food to anyone in need—while respecting their dignity and promoting good health.

Northwest Harvest is an independently funded organization. In fact, more than 2/3 all our funding comes from individual donors. That independence allows us to provide food to anyone who asks.





It doesn't matter where you're from, or what circumstances in life has led you and your family to a food bank, Northwest Harvest will take care of you in your time of need—without any restrictions. Just food for you; a smile from us; and your dignity respected.

And this is **ALL** made possible by people and organizations like you.

Northwest Harvest is grateful for all the support you have provided over the years. And together, we will achieve our vision of ending hunger in Washington.

ADVOCACY IN ACTION

Here at Northwest Harvest, we know that fighting hunger requires more than just feeding the hungry. We know that eliminating hunger requires addressing its root causes in poverty and disparities.

Advocacy on behalf of low-income people has always been part of Northwest Harvest's work. In 1967, when Northwest Harvest was founded, advocates identified the problem of hunger in our streets, then built the coalitions and partnerships between organizations and community resources to help those in need. Our community organizing continued throughout the years. In 2009, we first launched our Public Policy team to boost our advocacy efforts in the halls of Olympia and Washington, D.C.

Northwest Harvest actively engages in advocacy to promote investment in the public structures that aid in our fight to eliminate hunger by promoting access to nutritious food and economic security for low-income families. Our leadership regularly provides input to both our state and national elected leaders on hunger issues. We also work to improve access to safe, affordable housing, quality health

care, and economic stability in order to move the needle on ending hunger in Washington. In these ways, we are working to build a healthier, hunger-free Washington.

"If we ever wish to collectively end hunger, we must seriously look at ending each practice that widens opportunity gaps."

We are proud to have a leadership role in the Anti-Hunger & Nutrition Coalition and are a long-standing member of the Western Regional Anti-Hunger Consortium, the Washington Food Coalition, and other advocacy groups. We work to raise public consciousness about the extent of hunger in Washington—and that it takes the combined efforts of both charitable giving and public safety net services to eliminate hunger.

As Northwest Harvest CEO Thomas Reynolds explains, "Hunger does not manifest itself due to an equation of too many people and not enough food. The fact is, there is plenty of food to feed us all. The primary reason hunger exists here at home is because

we have structures that are failing us. We are failing in our ability to get nutritious food to the communities that are most in need. We are failing at supporting common-sense policy and legislation that protect our most vulnerable. And we are failing to effectively break down social barriers and discriminatory practices that perpetuate generations of lost opportunities for education, employment, health care, and housing.

If we ever wish to collectively end hunger, we must seriously look at ending each practice that widens opportunity gaps—while building and reinforcing those that create broad opportunities that lead us to a more equitable society.”

We hope that you can lend your voice, and help us end hunger in our state.

1 IN 7
WASHINGTONIANS
RELIES ON **SNAP**,
THE **SUPPLEMENTAL NUTRITION
ASSISTANCE PROGRAM** (FOOD
STAMPS)—WHICH IS SEVERELY
THREATENED BY BUDGET CUTS



17 ADVOCACY ALERTS
SENT WITH INFORMATION ON
CURRENT LEGISLATIVE EFFORTS
AFFECTING
HUNGER & POVERTY
AND WHAT ACTION
INDIVIDUALS
CAN TAKE



PRODUCED OUR
TENTH ANNUAL
**“FOCUS
ON FOOD
SECURITY”**
REPORT—

*FIRST-PERSON STORIES OF HUNGER
RECORDED FROM LISTENING
SESSIONS WITH FOOD BANK
CLIENTS STATEWIDE*



PROGRAMMING HIGHLIGHTS FROM OUR HUNGER RESPONSE NETWORK

This was a huge year for Northwest Harvest's Hunger Response Network. We launched a 5-year program with the Centers for Disease Control and King County Public Health to reduce sodium intake, and are implementing this project at our own Cherry Street Food Bank and four additional food bank partners in South King County. We hosted six Growing Connections workshops in six counties where we brought together local partners, farmers, and educators to increase healthy donations of produce to food banks and foster community connections with our partners. We also launched our online Produce Portal application—allowing food banks and meal

programs to easily claim extra produce at local farms. Our Three Squares program continues to serve kids across the state with backpack food on the weekends, and we made an impact on summer hunger in areas where children lack access to free summer meals through our Kids Summer Food Club.

On a national level, Northwest Harvest was selected to participate on the Closing The Hunger Gap Leadership Team and host the annual conference focused on food justice and social change.

Our programs team continues to travel to every part of the state—meeting one on one with food bank partners



to provide valuable technical assistance and support. They also attend coalition meetings each month across the state to share and disseminate information on best practices. Northwest Harvest continues to be an active and engaged presence on the advisory board for the Washington Food Coalition—which is a voice for food banks across the nation.

Finally, we have been incredibly busy in both Olympia and DC, advocating for the safety net that our neighbors and food bank customers rely on. We formed a participant advisory council which brings together food bank customers to our Cherry Street Food Bank monthly to share their stories, discuss their

unique needs, and organize on important, grassroots efforts and legislative decisions which impact their daily lives.

The Hunger Response Network looks to build upon each of these programs and activities—becoming an even more forceful proponent and advocate of people we serve across the state every day.



FOCUS ON NUTRITION

At the heart of all our programs is a firm commitment to health and nutrition. We know that low-income families often struggle for access to healthy food. That's just one of the reasons that two-thirds of the food we distribute are fruits and vegetables. But we go well beyond that. Northwest Harvest is dedicated to a number of healthy food programs that fulfill the special nutritional needs of infants, toddlers and school-age children.



Our **Three Squares Program** partners with schools in high-need neighborhoods to provide backpacks full of take-home meals and kid-friendly food for schoolchildren at risk of hunger. Three Squares completed its 13th year in 2017, filling backpacks with more than 60,000 food bags for kids in need every weekend and school break.

Cherry Street Food Bank's weekly **Baby Day** services provide baby food, formula, diapers, and healthy groceries each Thursday to 150 or more families with babies or children under 5.

Our **Kids Summer Food Club** provides supplemental groceries to families with school-age children in July and August, partnering with 19 food banks in communities with little access to summer meal sites. Kids Summer Food Club operates in 11 counties, distributing over 4,500 kid-friendly grocery bags and serving nearly 7,500 children.



PROGRAM INNOVATION

Northwest Harvest is able to meet our high nutritional standards by purchasing a significant share of our food, which ensures a consistent supply of in-demand, nutritious products such as fruits and vegetables, lean proteins, whole grains, and staples for healthy, culturally-appropriate meals.

Programs such as **Growing Connections**, our farm-to-food bank technical assistance program, offers partner food banks strategies to increase access to fresh, healthy, and locally grown foods. Trainings and online resources highlight a wide range of farm-to-food bank practices, and offer toolkits, food guides and nutrition education.

This year, we launched our new **Sodium Reduction Program** that aims to improve client health by promoting low-sodium products at food banks. Northwest Harvest partners with King County, UW Center for Public Health Nutrition, WSU Extension, and South County Food Coalition to promote healthy food choices and teach practices that can help lower sodium in the diet.

With your support, Northwest Harvest looks to launch additional health and nutrition initiatives that focus on making real-life differences in the well-being of our communities. These programs can help with our goal of allowing every child in Washington to grow up and reach their full potential.



ROOT OUT HUNGER: NORTHWEST HARVEST TURNS 50

Northwest Harvest commemorated 50 years of fighting hunger by raising over \$425,000 at our inaugural Root Out Hunger event on April 22, 2017. Root Out Hunger celebrated the positive impact Northwest Harvest has made in communities throughout the state, as well as honored those committed to improving the health and nutrition of those affected by hunger and poverty.

“A child cannot learn and cannot feed its mind when their stomach is empty.”

Focusing the event on childhood nutrition, Northwest Harvest received gifts totaling over \$100,000 immediately after Dr.

Benjamin Danielson of Seattle’s Odessa Brown Children’s Clinic accepted the 2017 Northwest Harvest Ruth Velozo Award.

Dr. Danielson addressed the issues surrounding health, nutrition and childhood development during his acceptance remarks. “Our clinic exists in sistership with Northwest Harvest, because we have learned the lessons that Northwest Harvest has been teaching and solving for 50 years. That food is elemental to the thriving of communities. Food is foundational to every other thing you want to do to lift up communities.” Danielson added, “A child cannot learn and cannot feed its mind when their stomach is empty.”

Northwest Harvest thanks all its Root Out Hunger sponsors and contributors for making such a positive impact in communities around the state.





Northwest Harvest's 50th anniversary premier sponsors are The Boeing Company and Alaska Airlines. Root Out Hunger sponsors included: National Frozen Foods, CenturyLink and Amazon.com.

Additional sponsors of the event included: UPS, WSECU, ZVNBGRN Funds, Holland America, Baird, United Healthcare, Banner Bank, Clark Nuber, Coldwell Banker Danforth, Bill & Melinda Gates Foundation, Pugh

Capital Management, Seattle Children's, Tree Top, Inc. and Vulcan Inc.

In-kind donors included: Grand Hyatt, Tiffany & Co., Canlis, El Gaucho, Johnson Barrow Co., Seattle Chocolates, Top Pot Doughnuts, Sigillo Cellars, Sun Liquor, Bellevue Brewing, FinnRiver Farm and Cidery, Chateau Ste. Michelle, William Church Winery, David LeClaire, and Herbivore Botanicals.

"Our clinic exists in sistership with Northwest Harvest, because we have learned the lessons that Northwest Harvest has been teaching and solving for 50 years. That food is elemental to the thriving of communities. Food is foundational to every other thing you want to do to lift up communities."

—Dr. Benjamin Danielson

CHERRY STREET FOOD BANK: AN INSPIRATION FOR GOOD ACROSS THE GLOBE

A story of how just one positive experience can change lives and better communities far beyond our imagination.

When Eric Darko arrived from Ghana to participate in the International Visitor Leadership Program (IVLP), a program of World Learning, a global nonprofit based in Washington, D.C. in 2015, he had no idea that his visit to Seattle would be life changing—not only for himself but also for the people in his community back home.

The 33-year-old biochemist, who works in agriculture and food safety for Ghana’s Food and Drug Authority, recalls being moved and inspired by the experience of volunteering at Northwest Harvest’s Cherry Street Food Bank.

“I had never seen a food bank before. Just the thought of hungry people coming in and picking up food really hit me,” recalls Darko. “I’m the kind of

person who likes giving. I remember leaving there thinking that someday I would open a food bank back home in Ghana.”

Ghana is a country of over 28 million people. Despite its relatively small size and population, it boasts one of the fastest-growing economies in Africa due to natural resources such as gold, diamonds and oil. It also has a strong agricultural sector, and the government is pushing more growth in vegetable production for export.

Still, food scarcity remains a big problem around the country, and just like here in Washington, the senior population is among the most vulnerable, explains Darko. “There



Cherry Street Food Bank

are often health issues and some are also out of active work and they can't afford three square meals a day," he says.

That's why Darko wanted to focus his efforts on helping older people in the community. In the summer of 2017, he made good on his promise, launching Eastern Harvest Food Bank in the New Juaben Municipality of Ghana's Eastern Region.

Darko started by asking close friends and family to donate food. So far 30 volunteers, some of whom work with the Municipal Nutrition Office and Food and Drug Authority, have given their time to help him distribute food at the country's first and only food bank. Some volunteers return with donations.

Darko wants to better understand the range of challenges of running a food bank before he tries to establish a second in another part of the country. With guidance from Northwest Harvest's Hunger Response Network staff, he hopes to grow and expand his services in his home country.

Despite the worry each week about how to find more donations to supply all the people in need with staples such as rice, oil, beans, tomato paste, sugar, and gari (a popular West African food made from cassava tubers), Darko says the experience has been incredibly rewarding. "You can see how thankful people are. They appreciate it so much. That's the true reward."

Special thanks to Stephanie Genkin, World Learning, for her contribution in telling Eric's story.



Eastern Harvest Food Bank

GOODBYE TO SHELLEY, MIKE & BONNIE

In 2017, Northwest Harvest honored three retiring staff members. Each have been long-serving, well-respected, and beloved figures in the nonprofit, hunger response arena.

Bonnie Baker, Director of the Hunger Response Network, moved on after more than 13 years as our front lines leader with our expansive network of meal programs, food banks and high-need schools. Bonnie was also instrumental in setting up our advocacy program—making it the vital agency function it is today.

Mike Regis, Director of Procurement and Outreach, retired after more than 30 years as the person most responsible for securing millions of pounds of food on an annual basis. Mike left our procurement function in great hands and will continue to be closely involved with our agency as the newest Northwest Harvest board member.

Shelley Rotondo, Chief Executive Officer, stepped down after 16 years at the helm of Northwest Harvest. During her tenure, Shelley oversaw the expansion of our Hunger Response Network and led a successful 13-month capital campaign that allowed the purchase and retrofit of a 94,000-square foot warehouse in Kent. Shelley also diversified our board of directors, doubled our food distribution, expanded our warehouse in Yakima, and secured a warehouse in Spokane—truly taking us to statewide recognition.

We wish Mike, Bonnie, and Shelley nothing but the very best as they start this new chapter in their lives. We will always be grateful to all three of these very special people and express our thanks for the amazing legacy they've built over many years—allowing us to make an even bigger impact across the state of Washington.



*From left to right: Shelley, Mike, Bonnie
(Sarah D. King Photography)*

LOOKING FORWARD

Our vision is to end hunger in the state of Washington. But, until that day comes, we will focus our efforts on effectively and efficiently increasing our capacity to get nutritious food and services where they are needed. We will be a passionate and effective voice for both our clients and our partners. We will develop, pilot, and scale innovative ways to support our partners around the state to make an even greater impact on the areas they serve. We will work on extending Northwest Harvest's reach to be a collaborative partner in the health and wellbeing of our communities and its members. We will engage, collaborate and advocate with other social justice agencies across the state to address the systemic causes of hunger through poverty. We will look to bring equity and justice to a food system that has failed far too many of our neighbors. And we look for your support with each new step we take.

We will become the definitive statewide platform that aims to cut hunger in half in the next decade by bringing food justice to Washington.



FACTS AND FIGURES

July 1, 2016 - June 30, 2017

EQUITY



More than **50%** of those we serve are **children & seniors**

1 IN 5 KIDS

in Washington lives in a household that struggles to put food on the table



HUNGER
isn't just
the absence
of food — it's
the absence of
JUSTICE

NUTRITION

About **1 in 8 Washingtonians** do not get enough food to meet their basic nutritional needs

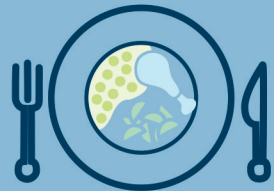


Approximately **$\frac{2}{3}$** of our food are **fruits and vegetables**

ACCESS

500,000,000 MEALS

PROVIDED IN OUR 50-YEAR HISTORY



24 MILLION
MEALS PROVIDED STATEWIDE



VOLUNTEERS
CONTRIBUTED OVER
**100,000
HOURS**

— EQUIVALENT TO MORE THAN —
50 FULL-TIME EMPLOYEES



STATEWIDE NETWORK OF PARTNER PROGRAMS

Distributed food free of charge to
375 Food Banks, Meal Programs
& High-need Schools

FINANCIALS

July 1, 2016 - June 30, 2017

REVENUE AND SUPPORT

DONATED FOOD & IN-KIND SUPPORT:	\$40,050,750
CASH DONATIONS & OTHER REVENUE	\$12,999,728
TOTAL:	\$53,050,478

EXPENSES

PROGRAMS AND SERVICES	\$49,415,424
DEVELOPMENT	\$2,736,411
MANAGEMENT & GENERAL	\$1,513,260
TOTAL:	\$53,665,095



Seattle Business Magazine
2017 Nonprofit of the Year



COMMUNITY IMPACT
AWARDS 2017
WINNER

DONORS

We gratefully acknowledge the support from individuals and organizations who contributed between July 1, 2016 - June 30, 2017. Although we cannot list them all, Northwest Harvest is grateful for gifts of every size.

Gifts of \$250,000 and above

The Boeing Company
Microsoft Matching
Gifts Program

Gifts of \$100,000 - \$249,999

Crabby Beach Foundation
Entertainment Industry
Foundation
Estate of Edward Wartelle Sr.
Estate of Joan E Brown
Ford Motor Company Fund
Joshua Green Foundation
Shyamalan and Emily Pather
Puyallup Tribe of Indians
Schwab Charitable Fund
State of Washington
Department of Personnel

Gifts of \$50,000 - \$99,999

Arthur Munson
Charitable Trust
Steve and Connie Ballmer
Biella Foundation
Elisabeth Bottler
CenturyLink Clarke M
Williams Foundation
Combined Federal
Campaign King County
Keith & Mary Kay McCaw
Family Foundation
King County Employee
Giving Program
The Medina Foundation
Peter Rhines
Seattle Chocolate Company
Thomas and Dorothy Sheehan
Hans Spiller
Craig and Nicole Ueland
United Catcher Boats

Gifts of \$25,000 - \$49,999

The Albertsons Companies
Foundation
Nicholas Bez
James and Marie Borgman
Capital One
James Champoux and
Sharon Schultz
City of Seattle
Michael and Pamela
Courtneage
Estate of Barbara Erling
Estate of Rachel B. Waggoner
John B. Fitzhugh
The Glaser Foundation
Conrad and Barbara Hanson
The Howe Foundation
Merchant du Vin
Microsoft Corporation
Munchery Inc.
Network For Good

The Norcliffe Foundation
E. F. Norwood
One*
Eleni Papadakis
The ROMA Foundation
Saundra Ruth
Safeway Foundation
Jim and Burnley Snyder
Sterling Realty Organization
Suskin Charitable Foundation
Victoria Trimble-Lowe
US Bancorp Foundation
Matching Gifts
Wells Fargo Foundation
Gordon Younger

Gifts of \$10,000 - \$24,999

Alaska USA Foundation
Chap and Eve Alvord
Amazon.com
American Construction
Company
Aram Properties Inc.
Beacon Plumbing
Mechanical Inc.
Michael and Julia Becke
Eric and Susan Boyd
Ernest and Diane Burgess

Stanley E. Case and
Mary C. Warren
Andrew Clapp
David and Denise Cole
Combined Federal Campaign
Rodney P. Cornwall
Ketan Dalal and Allison Klein
William and Susanne Daniell
Suzan and Kurt DelBene
Cindy A. Demeules
Robert and Janine Dodson
Dorsey & Whitney LLP
Albert Dosser
DSS Family Partnership
Michael and Hannah Ducey
Sandra Dunn
Farmers New World
Life Insurance
Fidelity Charitable Gift Fund
Foster Foundation
Sibyl Frankenburg and
Steven Kessel
Natalie Gendler
Gilead Sciences
Give with Liberty: Liberty
Mutual Foundation Match
glassybaby
Goodman Real Estate
GreaterGood.org

Matt Griffin and
Evelyn Rozner
Sandra Hamilton
Charles and Marie
Ann Hoffman
Holland America Line
IBM Employee
Services Center
Sarah Imbach and
Andrew Nowka
Jean K. Lafromboise
Foundation
Keyes Foundation
Jerry King and Sue
Eastman King
Jill Kirshner
Donald and Janice Kline
Victoria H. Leslie
Leslie Fund Inc
Chelsea and Andrew Lientz
Terry and Ruth Lipscomb
Loeb Family Charitable
Foundation
Michael and Trish Martin
Mattaini Family Foundation
MAZON: A Jewish
Response to Hunger
Debra and Robert Meyerson
Molecular Epidemiology Inc.
Muckleshoot Casino

*1967: Social,
political and racial
tensions simmered
around the nation.*

1967



*A group of Seattle community leaders
formed a social justice organization
committed to identifying and addressing
the primary problems of the poor and
disadvantaged.*



*Hunger, they soon
learned, was one of
the biggest problems
in Seattle and
beyond.*

Nordstrom
Paramitas Foundation
The Paul M. Anderson
Foundation Fund
Brandon and Janet Pedersen
William Pittman
Puget Sound Energy
RealNetworks Foundation
Brian Regan
Barbara Reskin and
Lowell Hargens
Richard A. Saada
Safeco Insurance Fund
Joseph C. Saitta
The Schuler Family
Foundation
Seattle Rotary Service
Foundation
Seattle Singles Yacht Club
David Simpson and
Maritza Gaxiola
Jane and Roger Soder
Kira-Anne Sorensen and
Christopher Jones
Joanne Squires
Hugh and Cheryl Ann Stewart
Carol Thixton
Doris Torkelson
Jason and Anne Totah

Ms. Jeanne E. Tweten and
Mr. James W. Leslie
The UPS Foundation
Vanguard Charitable
Endowment Program
Mark and Carole Walters
Washington Federal
Washington State Society
WDFA LLC
Edward and Cynthia Weber
WSECU
ZVNBGRN Funds

Gifts of \$5,000 - \$9,999

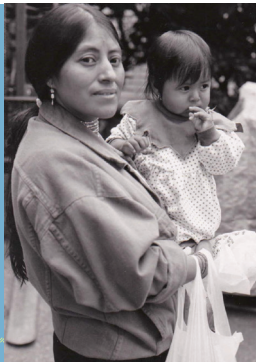
Susan J. Abbott
William and Janette Adamucci
The Ahn Family Foundation
Robert O. Akers
Alaska Airlines
The Apple Py Foundation
ATS Automation
Timothy Atwill
Avista Corporation
Ballard Sewing & Vacuum Inc.
Robin Bentley
Paul and Christina Bleisch
Bloomberg
Paul and Rebecca Bouchey
Jay Bower

Jeffrey and Susan Brotman
Marshall and Jane Brown
William and Vivian Burnett
Melinda and Richard Bus
Cafe Pacific, Inc
Joseph Rick Carroll
Mike Cato and Barbara Miller
Alethea Clark
Kim and James Clifford
Concur Technologies
The Conner Homes Group LLC
Cruise Industry Charitable
Foundation
Charles Curry
Peter Davis and Susan
Crampton
William Dodson
Debbie and Kevin Donovan
Drywall Distributors
Bill and Maureen Duggan
Christine Cave
EMC Corporation
Enterprise Holdings
Foundation
Estate of Doris M. Pellegrini
Estate of Irma Louise Dizard
Fales Foundation Trust
Andrew Faulhaber
Fiduciary Trust Company
International

First Tech Federal
Credit Union
Linda Monfore Fluke
James and Amanda Franck
Alan and Michelle Frindell
Gaco Western LLC.
Kathryn Gardow and
David Bradlee
Gordon A. Gilbert
GMMB Seattle
The Grainger Foundation
Robert and Allison Grayson
Bruce Hall
Daniel and Pamela Harkins
Healthcare Management
Administrators
Heritage Bank
Wendy Hester
Amy Hood and Max Kleinman
Max and Jan Hunt
Shawn O. Hurley
Ideal Toys Direct Inc.
Amanda Johnson
Floyd Jones
JustGive
Keith Kelley
KeyBank Foundation
Jayne Krentz
Lakeside Milam Recovery
Center - Kirkland

Lang Homes LLC
Joshua Lang and Carolyn Hart
Joyce Lang
Lawyers Helping
Hungry Children
Annette and Kevin Lennon
David and Melinda Littrell
Maxwell and Alison Long
The Lookout Foundation Inc.
Michael and Lisa Losh
Leslie Mattson
McKinstry Charitable
Foundation
Joy McNichols
Messiah For Relief Foundation
Richard and Alice Middaugh
Cornelia and Terry Moore
Grady Morgan
Sandra J. Moss
Barrett Nelson
Alec and Margot Newman
Norman Archibald
Charitable Foundation
Susan Onstad
Paccar
Joel Paston
Perkins Coie Foundation
Ann and Craig Peterson
Pike Place Chowder
William Porter

Pressco Products
Principal
Oleksii Prokopchuk
Propel Insurance
Puget Sound Bank
Stanley and Diana Rall
Robert Raphael and
Jennifer Naimy
Joseph Ratterman
Edward and Marjorie
Ringness
Shawn Rutledge and
Rebecca Fleck
John and Denise Schnagl
Schultz Family Foundation
Jennifer and Samuel Schuy
Edward and Christy Scripps
Brett Seanson
Seattle Sonora Foundation
Stanley and Sheryl Sharp
Taylor K. Sherman
Rolan and Lynn Shomber
David H. Simmons
Skagit Bank
Patricia T. Smoll
Spokane South Rotary
Club Foundation
Janet St. Clair and John Amell
Stillaguamish Tribe of Indians
David F. Stobaugh



1968: Estimates put the number of hungry Americans at 10 million.



Federal Food Stamp Program participation grows from 1 million in 1966 to 10 million in 1970.



Doug Taylor
 Stephen and Elda Teel
 Kathryn and Daniel Templin
 Jon Tinter
 The TJX Foundation
 Truist
 The Tucker Fund
 Mavis Tugby
 Tulalip Tribes Charitable Fund
 Universal Life Church
 Raymond Veronte
 Gregory and Kathy Viececi
 Douglas and Karen Wade
 Ruth and Todd Warren
 Walter Weber
 Wesley United
 Methodist Church
 William E. Buchan, Inc.
 Jeffrey and Maria Wolcott
 Naomi and Edwin Woodward
 Wyman Youth Trust
 William and Michelle
 Youngsman
 Clark and Patricia Zehnder

Gifts of \$1,000 - \$4,999

1st Security Bank of
 Washington
 A-America, Inc.

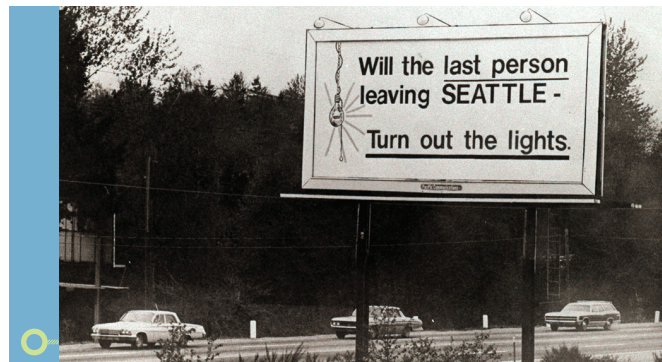
Kenneth W. Aaron
 Spencer Abel
 Joanne Abelson and
 Chris Goelz
 Bernard Aboda
 Michael and Brenda Adams
 Elizabeth and Eric Aderhold
 Sam Adkins
 Adobe
 Shawn and Lynne Aebi
 Aerospace Machinists
 Industrial District Lodge 751
 AFECT
 Anne and Allan Affleck
 AFT Local 4254 Edmonds
 Community College
 Karen and Michael Agy
 Abid Ahmad
 Dawn E. Aiken and
 Miguel C. de Campos
 Tyler Albert and Whitney
 Harrington
 Albert and Pamela Bendich
 Charitable Trust
 Ron Aldridge
 All Battery Sales and Service
 All Saints Episcopal Church
 Rebecca Woodhouse Allard
 Barbara Allen and
 Joe Leinonen

Carolyn Allen
 Robb Allen
 Elena and R. David Allnutt
 Curtis Allred and
 Barbara Braun
 Allstate Giving Campaign
 Alston, Courtmage
 & Bassetti LLP
 Nancy D. Alvord
 Amazon Web Services
 AmazonSmile Foundation
 Douglas and Kirsten Ambach
 American Endowment
 Foundation
 Sean Anastasi
 Anchor Bank
 Mr. and Mrs. Franklyn
 D. Andersen, Jr.
 Brad Anderson
 Daniel and Helen Anderson
 Evan and Emily Anderson
 Shawn and Maria Anderson
 Sundie Anderson
 Arthur Andriessen
 Olga Andronyk
 Apollo Video Technology, LLC
 Andrew and Teresa Appel
 Aptevo Therapeutics, Inc
 Fazlollah Arian
 Glen and Sharman Armstrong

William and Helen Aron
 Julie-Anne Arsenault
 Art Morrison Enterprises Inc.
 Chad Assareh
 AT&T Corporation
 Charles Atkinson
 Diana and David Axness
 Stephen and Melissa Babson
 Baby Bits, LLC DBA
 Scout's Mini Donuts
 Les Baer
 Dorothy and Hall Baetz
 Carrie Bagatell, M.D.
 Brodie and Stuart Bain
 Darlene and Adam Baker
 John Baker
 Stephanie Baker
 Kit Bakke and Peter Russo
 Harriet and Jon Bakken
 Mike Ball
 Bank of America
 Charitable Foundation
 Patricia and Michael Barcott
 Geoffrey and Anne Barker
 Susanna Barnett
 Craig Bartholomew
 Ryan Bartlett
 Kay and John Bassett
 Battelle
 Shelli Battraw

Stephen and Salli Bauer
 Tim and Nerissa Beaver
 Joseph and Rachel Beda
 Scott Bednar
 Michael and Ivana Begley
 Dennis and Maureen
 Bekemeyer
 Steve Bell and Wendy
 Walker-Bell
 Bellevue Community College
 Bellevue Medical Imaging
 James and Angela Bennett
 Jeffrey N. Bennett
 Stuart Bennett
 Pamela and Richard Beresford
 James and Mary Bergman
 Brad Berkness
 Mary and Mary Berni
 George and Sharon Bertsch
 Andrew Biles and
 Joseph Donovan
 Bill & Melinda Gates
 Foundation
 Bill & Melinda Gates
 Foundation Matching
 Gifts Program
 Derrick Birum
 Bishop Fleet Foundation
 Andrew Bishop
 Paul Bishop

Carl Blackstone
 Laura and Larry Blaine
 Mark Blanchett and
 Marcia Farrow
 Jack Blaylock
 Thomas P. Bleakney
 Ryan L. Bloom
 BNY Mellon Wealth
 Management
 Bobby's Fund Foundation
 Joseph and Karla Bocek
 William A. Bock
 Boeing Employees
 Credit Union
 Laura M. Bolser
 James and Kathleen Borgman
 Nancy Borne Maynard
 David Bortz and
 Carolyn Webb
 Catherine Boshaw
 Andre Bouffard
 Deborah and Linda
 Elizabeth Boyapati
 Boyd J. Bender
 Physical Therapy
 Stephen and Reri Boyer
 David and Debra Boyle
 Colin Brace
 Jane Bradbury
 Thomas J. Breyer



*1968-71: Ailing aerospace industry
 changes face of local economy.
 Unemployment rates quadruple from
 under 3 percent in 1968 to over 13
 percent in 1971.*

1971



Robin Briggs
Dodi and Richard Briscoe
Bristol-Myers Squibb
Company Employee
Giving Program
James and Denise Brooks
Maria and Richard Brooks
Teresa Brooks
Brown Dog Foundation
Brown Paper Tickets
Jonathan Brown and
Brynnen Ford
Julie Brown
Kathy Brown and
Richard Shinabarger
Sally Brown
James Bruce
James and Donna Brudvik
Michael Bruner
Gordon Bryant
Jack and Barbara Bryce
Andrew and Nancy Buchanan
Jonathan and Carol Buchter
Troy and Kristin Buckley
Robin Buckmiller
Paul and Michelle Buerk
Builders' Hardware &
Supply Co. Inc.
Dorothy Bullitt
Carl Bunje

Scott and Lisa Burbage
Randal C. Burge
Norman Burt
Thomas and Ann Burt
Richard Busch
George Buswell
Edward Buzzell
Breck and Margaret Byers
Jessica Cacciola
Cafe Veloce
Cairncross & Hempelmann PS
Corinna Calhoun
Bryan Callahan
Carolyn Campbell
Victoria Campbell
Amelia C. Canaday
Nancy and Scott Cannon
Peter and Linda Capell
Capital Industries
Peter and Melinda Carbon
Mariann Carle
Gloria Carlson
LaDonna and Larry Carlson
Trevor Carlson
Carl and Patricia Carnahan
Carney Badley Spellman, PS
Courtney Carpenter
James Carpenter
Kelly and Marilyn Carpenter
Dominic Carr

Alexia Carroll
Forrest and Amy Carroll
Robert J. Carroll
Alan and Janan Carter
Cascade Rambler Club
Paul Cassella
Catherine Holmes
Wilkins Foundation
CentiMark
CH2M Hill
Charitybuzz
Charles Schwab & Co. Inc.
Chateau Ste. Michelle
Tang Cheam and Teresa
Agtuca-Cheam
Patrick Chen
Dale and Ruth Chenault
Ann Cheng
Michael Cheng
Anne and Trishul Chilimbi
Melissa Chinn
Mullan and Patricia Chinn
Yongbai Choi
Dick and Jane Christie
Gerald R. Chrobuck
Churchwomen of
St. Stephen's
Grant T. Chyz, D.D.S.
Andrew Clare
Clark Nuber

Dean and Susan Clark
Donna Clark
Geoffrey M. Clark
Simon Clarke
Jeffrey Clemons
Maria and Kyle Clevenger
Susan Clifford
John and Marcia Cochenour
Cindi Cochran and
Chris Bauknecht
Coffman Engineers
William Cohon and
Rebecca Ringer
Coldwell Banker Danforth
& Associates
Doug Cole
Robert Colleran
Nicholas and Lisa Collier
Anthony and Kris Collins
Nathan Collins
Columbia Bank
Combined Federal Campaign
of South Puget Sound
Combined Federal Campaign
Of The National Area
Robert and Karen Conrie
ConAgra Foods, Inc.
Concern For Neighbors
Food Bank
Michael and Michael Connor

Contract Hardware Inc.
James and Marilyn Cook
Matt and Lisa Cooper
Cleo F. Corcoran
Lorrie Corliss
Jason and Emily Cornwell
Carolyn Corvi and John Bates
Timothy Cosgrove
Patricia Coulter
Guy Cournoyer
Barbara and Ken Cowan
Scott Cowell
Jeff Craggs
Michael Crandall
Crawfish House
Janet Crawford
Mary Crawford
Jan and Thomas Crews
Jim and Nancy Crim
Richard Crispo and
Eleanor Sanchez
Patty and Moshe Cristel
Nina Crocker
Kris and Steve Cromwell
Calvin and Lois Crow
Crowley Cares Foundation
Manuela and Terrence
Crowley
Vannoy and Deborah
Culpepper

Keith Cunningham
M. Sue Curtis
Thomas Curtis
Diane Cvetovich
Ardella and Albert Daggett
Mark D'Agostino
Steve Dahlberg
John W. Dailey
Stephen and Susanne Daley
Darin Dalmat
Dan and Joann Wilson Fund
Mark K. Daniels
Barbara and Alan Davidoff
Anita Davidson and
Robert Friedman
Ernest and Reba Davidson
Gordon B. Davidson
Jerry and Mary Davidson
Nora and Allen Davis
Robert Davis
Margo Day
Marilyn and Michael
De Guzman
Mary De Guzman
Elizabeth de Leeuw
Kathleen G. Deakins
Mary Deaville
Robert DeLine
Robert and Marlyne DeLong



1970: Northwest Harvest joins forces with partner orgs to create an "emergency" food bank system. The network of 34 food banks opens as "short-term" response to unemployment crisis.



Within a year, the network is serving an average of 70,000 people each month.

1972

Del's Auto & Truck Repair
Center/Del's Truck Rentals
Mark DeManes
Joe and Addy Demers
Shelli and Shelli Dennis
Joseph R. Desimone
Patricia Desimone
Francis DeVitis
Mark Dexter and
Deborah Cowley
Murray and Vicki Dick
William and Barb Dickerson
Gerard Diercks and
Debra Prince
Sarah and Daniel Dilling
Michael and Diane Dinkelman
Joan Dinkelspiel
DiPietro Family Foundation
Mark Ditto
Mary and Joseph Dixon
Emmett Doerr
Stacey Doerr
Terrence and Barbara Doherty
Bill Dolan
Matthew Domarotsky
and Dana Trethewy
Bruce and Dolores Dong
Mike Donnenwirth
James Donohue
Ian Dotson

Larry Dovala
Lavinia Downs
Drain Tech Inc.
Fred Drennan
Stephen Driscoll and
Irene Goto
Jesse and Jenny Dubow
Anna and William Duff
Fred DuMez-Matheson
Robin Dushman
E & H Humbly Bumbly
Foundation
Karen Easterbrook
Tom Eaton
Bronwyn and Louie Echols
Eddie Bauer Inc.
Jeff and Robyn Edgbert
James and Judith Eggerman
The Elaine and Vincent
Bell Foundation
Amy Elder
John and Kim Elias
James Ellingboe and
Michelle Margroff
Richard and Joanne Elliott
Erin and William Ellis
Lynda M. Emel
Emergency Food Network
Connie Emerson
Emmanuel Episcopal Church

Thomas and Maryann Englert
Enviromech Inc.
Lowell Ericsson
Sarah Ervine
Espresso Vivace
Mark and Sally Esser
Estate of June E Henderson
Christine Estes
Jennifer B. Etter
The Eureka Foundation
Dan and Celia Evans
Donna and Samuel Evans
Beth Evans-Ramos
Expedia Inc. Matching
Gifts Program
Expedia.com
F5 Networks Inc.
Roberta E Falk
Justin Fallstrom
David Fandel and
Heather Sherman
Jeffrey and Doreen Fasen
Mark Fauls
FC Bloxom Company
Kenneth and Jane
Ann Feldman
John Fenker
Kristin Ferguson
William and Syble Ferguson
Colleen Fichtner

Fiddler's Inn
Dorothy Fidler
Terry and Linda Finn
First Sound Bank
Heidi Fischer
Juanita Fischer
Steven Fischer
Danyel Fisher
Albert Fisk and Judith Harris
James and Lisa Florio
Francis and Joyce Floyd
Floyd, Pflueger, & Ringer,
PS Attorneys at Law
Jonathan Flugstad
Patricia L. Fluhrer
James and Barbara Flyum
FM Global Foundation
Oliver and Helen Foehr
Deborah and Stephen Foisie
Mark and Willow Follett
Paul Fondahn
Michael Ford and
Elizabeth Davidow
Amy Forsberg
Jim Forsyth
James Fortier and K.
Denice Fischer-Fortier
Arvin and Patricia Fosse
Gretchen and Chad Frampton
Amy Francis

Frank and Judith
Marshall Foundation
Donna J. Franklin
Fred and Gretel Biel
Charitable Trust
William Freitag
Charles and Regina Frevert
Patrick and Penny Frey
Alicia R. Freyman
Asmus Freytag and
Laura Wideburg
William and Sabine Friedman
David and Deborah Friend
Daniel Fry
Laura Fryer
Robert and Virginia Fulton
Michael and Whitney Funsinn
Paul G. Furlinger
Roger and Virginia Gabelein
David and Jill Galiotto
Joann D. Gallagher
Lisa M. Garbrick
Thomas Gates and
Marilyn Holmberg
William H Gates III
Gerard Gay
GE Foundation Matching Gifts
Kevin and Susan Gehringer
Ann and Martin Gelfand
Gemperle Enterprises

Gensco Inc.
Katharyn Alvord Gerlich
Gersher Fund of the
Jewish Federation
Eric and Cheryl Getsinger
David Gibbs
Gibson Family Foundation
Elgie and Leah Gibson
Nancy Gigante
Michael Gilbert and
Colleen Krueger
Jeffrey Gill
George Ging
David and Patricia Giuliani
Robert Glaser
Michele and Daniel Glasser
Jeremy Glassy
Susan Gleckler
Glenora Company
Glesby Marks
Global Health Strategies
Globys, Inc.
Glory Global Solutions Inc.
GLY Construction
Scott and Amy Goble
Carol and Tal Godding
Chesley Godfrey
Martha Goelzer and
Larry Felser
Henry and Andrea Goffin

*1980: Northwest Harvest
secures just over a
million pounds of food for
distribution to programs
in five counties.*

1980



*1982-85: \$7 Billion is cut from
federal food stamp program,
and qualifying becomes
more difficult. Child nutrition
programs also receive huge
cuts, reducing benefits by
more than a quarter.*



Charles Goggio, Jr.
Nancy Goldsmith
Goldstar Events Inc.
Anthony and Alison Gomes
Keith Gomes
Marc and Gina Gonchar
Ramiro Gonzalez
Good Done Great
Raymond Goodwin
and Kathy Berman
Google Matching
Gifts Program
Andrew Gorcester
Jerri and Don Gordon
Michael Gordon
Cathy Gorman
GPMCH Foundation
James B. Graber, D.O., PS
Louis and Frances Graber
Richard H. Grader
Michelle Graham
John and Ann Granath
Katherine Graubard
and William Calvin
Ann Greaney and
Robert Hiltner
Kevin and Theresa Greene
Frances Greenleaf
George and Catherine Greer
Henry and Carol Lea Gregory

James Gregory and
Susan Glenn
Jennifer Gregory
Ron Gregush and Erica
Brandling-Bennett
Dr. William Greiner
and Mrs. Beck
Steven Grieger
Joanne Griffin
Kerri and George Griffin
William and Marjorie Griffin
David Guenther
Timothy Gunderson
Kathryn Guykema
and Robert Grey
Beth Hacker and Mark
Zimmermann
Helen Hackett
Stephen and CJ Hadden
William and Joni Hafner
Jon and June Hahn
Julian Haight
Cristine and Jeffrey Hales
Cathy Hall
Teal and Janie Hallstrand
John Halski
James and Darlene Halverson
Sheryl Hamilton
Chris Hampshire
David Hancock

Jack and Ellen Hankins
Cheryl Hanks and Selden Hall
Joseph and Catherine Hannan
Lucas D. Hansen
Greg and Marie Hanson
Gregory Hanson
Matt and Phaleen Hanson
Susan and Jon Hanson
Harborstone Credit Union
Lawrence and Hylton Hard
Christopher Hardy
Dietrich Hardy
Aurelia and John Harlowe
Alden Harris
Rob Harris
Hartman Giving Fund
William A. Hartness
Edward and Janice Hartstein
Leland Hartwell and
Theresa Naujack
Arlyn Harwood
Matthew Hastings
Hatrup and Associates, PS
Robert R. Haugen
Scott Havel
Edwin and Noriyo Hawxhurst
William and Janet Hayes
Ray Heacox and
Cynthia Huffman
Paul and Cindy Healy

Vincent Healy
Elizabeth J. Hebert
John Hebert
Jane Hedberg and
Gary Schwartz
Magnus and Heather Hedlund
J. Patrick and Catherine
Heffron
Helly Hansen
Dan M. Hennessee
Bill and Sue Henry
Lisa Henry
Kathy Hensley
Patrick and Sabrina Hepe
Lynn and T. Scott Hergert
Michael and Teriann Herman
Mark Hernberg
Andy Herron
Tim H. Hevly
Jean and W. J. Higgins
Wendy Higgins
Harold and Mary Hill
Ken Hill
Kenneth R Hill
Gerald and Lena Hirschler
Lawrence Hitchon
William H. Hodge, Jr.
Ilene Hogaboam
Paul Hogle
Susan Holdeman

Cynthia C. Holdren, M.D.
Kathryn Hollingsworth
Eric Hooper
David Hope Simpson and
Michele Holowachuk
Kenneth and Mary Hopkins
Craig Hopperstad
Hopperstad Consulting, Inc.
William G. Horder
Horizons Foundation
Robert Horn
Stephen Horne
Margaret and Marc Horton
Isobel and Loren Hostek
Susan Hotelling
Jonathan and Christina Howell
Robin Hruska
Calvin Hsia
Joan Hsiao and
James Bromley
Li-Hsin Huang
Steven Huff
David Hughart
Dave and Belinda Hughes
Geoffrey Hunt
Amber Hunter
Joel and Christi Hussey
Domenick and Susanna Iaccino
Larry and Kathy Ice
Icicle Seafoods Inc

Chan Im
Inland Northwest
Community Foundation
Intellectual Ventures
Al Irvine
Susan R. Irwin
Timothy and Jennifer Irwin
Elizabeth G. Isaacson
Isador Simon Family
Foundation Trust
Diane R. Isonaka
Karen Israel and
Steve Goodman
Rebekah Ives
Brian Jack
Jaenicke Inc.
Darren and Jennifer Jamiel
Janet Kurjan Fund
Jordan and Kirstin Jansen
Edward Jennings and
Karen Jelter-Jennings
Rex and Teri Jennings
Mark Jewett
Johnson International
Industries Inc
Diana and Robert Johnson
J. Douglas and Nancy Johnson
James and Lynda Johnson
Linda and Theodore Johnson
Lisa Johnson

The present food bank system arose largely in response to these changes. Indeed, over a third of Northwest Harvest partner food banks were established between 1980 and 1986.



1986: Northwest Harvest secures more than 9 million pounds of food and distributes to 22 counties in Washington.



Paul and Diana Johnson
 Richard and Jeanne Johnson
 Thomas C. Johnston
 Patricia Jolin and Philip Wood
 Ronald Jonas and
 Derik Mortlock
 John and D. Gail Jones
 Kimberly Jones
 Michael Jones and
 Teresa Frizell
 Richard and Aimee Jones
 Wendy and Bill Jones
 JP Morgan Chase
 Foundation Matching Gift
 & Volunteer Program
 Andrew and Maureen
 Juenger
 Daniel and Beth Jump
 Charles and Carol Jung
 Moon-Ho and Stephanie
 Kim and Pamela Kaiser
 Clare Kapitan and
 Keith Schreiber
 Robert Kaplan
 Kapstone Paper and
 Packaging Corporation
 Karen and Karen Karpack
 Pinkesh Katariwala
 Noah Katka
 Kauffman Family Fund

KC Brand Kettle Corn
 Ronald and Elizabeth Keeshan
 Kristen Kelln
 Jessica and Sean Kelly
 Linda Kelly
 Sheila Kelly
 Darrell and Margaret Kemper
 Jane E. Kennedy
 Mary and George Kenny
 Emily Kent
 Kent School District #415
 Nancy and Robert Kent
 Matthew Kernek and
 Puncheep Wongsrikul
 Peter Kerr and Cynthia Wells
 Emre and Johanna Kiciman
 Kidder Mathews
 Francis Kim
 Hyon Kim
 King & Oliason PLLC
 Doug and Shanon Kirby
 Cathy Kircher
 Mr. and Mrs. Kirkpatrick
 Kirlin Charitable Foundation
 Kitsap Community Foundation
 KLB Construction
 Mark Klebeck
 Willis Kleinenbroich
 Ronald Kline
 David and Lynette Klingeman

Robert J. Koerner
 Dale and Laura Koetke
 Koh-Lee Foundation
 Adam Kord
 Mindy Kornberg
 Dennis Koskey
 Nathan and Amy Kostal
 Glen Kriekenbeck and
 Quentin King
 Joseph Kropf
 A. A. Kumar and Anur
 Krishnaveni
 Deborah Kusaka
 David W. Kwolek
 Daniel R. Kyler
 L.N. Curtis & Sons
 Daniel J LaFond
 Dawna and Jim Lahti
 Phillip and Winifred Lake
 Peter and Jane Lamb
 Sean Lambert and
 Karen Ognan
 Lisa LaMonica
 James Lamoureux
 Joyce and Joseph Lane
 Lorrie A. Langdale, M.D.
 Christopher and Alida Latham
 Latona Pub
 Angela Lausch and
 Paul Christianson

Richard Lauth
 Nancy Lawton
 Kathleen and Timothy Leach
 Nicole and Matt LeBlanc
 Dan Lecocq
 Chih-Tun and Tzu-Ting Lee
 Felix P. Lee
 Janie Lee
 Lyn and Douglas Lee
 Leidos, Inc.
 Mark and Rae Lembersky
 Lenovo Employees
 Care Campaign
 Richard G. Leonard, Jr.
 Barbara and Matthew LePage
 Lessler, Daniel
 Jessica Leung
 Dennis and Linda Leuthauser
 Level Builders Inc.
 Randall J. LeVeque
 Dana and David Lewis
 Henry Li
 Stephen Liang
 Tabitha Lieberman
 Lighting Group Northwest Inc
 Bonny Liljebeck
 Daniel Lindvall
 Steven and Anne Lipner
 Mark Litchman
 Frances W. Lloyd

Alice Lobenstein and
 Elizabeth Becker
 Becky Loeb
 Greg Logan
 Michael and Gloria Logan
 Christopher and
 Alison Lomaka
 Mary Lonien and
 Sandra Lynn Smith
 Lonin League
 Loomis Foundation
 Betty Lopez
 Craig Lorch
 Deborah Lorvick
 Howard and Cathy Lowen
 Steven and Elizabeth Lucco
 Allison Luhrs
 John and Wendy Lunardi
 Benjamin Lundell
 Jean Lunstead
 Douglas and Angela Lusk
 David and Louise Luthy
 Paul and Lita Luvera
 Patrick Lynch
 Matthew Maas
 Andrew and Roopal MacDuff
 Ross and Lisa Macfarlane
 Brendan and Collette
 MacLean
 Ronald and Debra MacLean

Gary and Cecilia MacPherson
 Mad Hatters Ice Cream
 Debra Madsen and
 Ann Stevens
 Thomas and Rowayne
 Maguire
 Dennis and Mary Maher
 Jacquelynn and
 Gerald Mahoney
 Elizabeth and Dallas Mahrt
 Kevin Majeau and
 Karin Fosberg
 John L. Makey
 Patrick and Kelly Malley
 David Mancini
 The Marcia Paulsell
 Zech Foundation
 Mark Levine Foundation
 Marklyn Family Foundation
 Timothy and Connie Marrs
 Kuyler Marsh
 John and Nancy Marshall
 Daniel Martin
 Fowler Martin
 Thomas and Leslie Martin
 Carol and Sal Matarazzo
 Andrea Mathews
 Scott and Joanne Mathis
 Kurt Mathisen
 Matson Foundation

*1990: Northwest Harvest
 opens warehouse in
 Yakima to help better
 serve Central and Eastern
 Washington partners.*

1990



*1994: Participation
 in the Food
 Stamp Program
 reaches 28 million
 nationwide.*



Teresa A. Matthews
Matthew and Susan Maury
Anthony Maxey
Thomas May
William and Nancy Maynard
Kenneth Mayne
Dennis E. Mayock
Betty and Allen McCall
Eve McClure
Christopher McClurken
and Jessica Hernandez
Cindy and Scott McConnell
Robert and Robert McConnell
Cara McDermott
Jeanne and Tom McDonagh
David and Pamela McDonald
McElevey Charitable
Foundation
Loren and Mary
Jean McElvain
McGee Wealth Management
Nancy McGinnis
Jeffrey T. McGrew
Marilyn J. McGuire
McIlrath Family Farms
Andrew McIntyre
Bill P. McJohn
James McKendry
James and Karen McKenzie
McKinstry Company

Craig McLuckie
Patrick McMenamin
Craig and Jan McNeely
Milton Meeker
Peter Meister
Richard Mellen and
Jo Robinson
Robert and Debra Melo
Ravi and Catherine Menon
Meridian Environmental Inc.
Merrill Lynch, Pierce,
Fenner & Smith Inc.
Charlotte Merritt
Cathleen Meyer
Jerome and Lyla Meyer
Daniel and Angela Michael
David Middaugh and
Mary Rae Bruns
Terri Middleton
Richard and Lorraine Mietzner
Milgard Manufacturing Inc.
Alaine Miller
Donavan Miller
George Miller
Matthew Miller and
Janet Kaseda
Sharon and Cameron Miller
Michael and Jeanne Milligan
Jessica Milman
Robert and Pamela Minkler

Frank and Heather Minton
Gregg Miskelly
Ted Misselwitz
Elizabeth Mitchell
Mary and Michael Mitchell
Gene Miyamura
Richard and Kathryn Miyauchi
Daniel Moore
Eric and Lisa Moore
Gary Moore and
Eileen Marshall
Ken Morain
Kenneth D. Morain
G. Glen and Vivian Morie
William Morkill
Jonathan and Lucy Morrison
Christine Moss
Bud Mount
Sandy and Al Moy
Thomas Mrowca
MTE Fund
Alexander Mullans
Lora and J. Shan Mullin
Wendy Munroe
Alyson Murphy
Richard A. Nagel
Barbara and Mike Napier
National Philanthropic Trust
Naval Base Kitsap
Sheree Neal

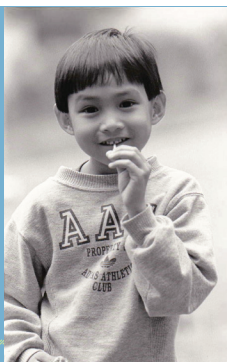
R. Scott Neely
Neighborhood Cooking
Foundation
George and Irene Neiswanger
Craig and Roberta Nelson
Denise Nelson
Erik Nelson
Michael and Loree Nelson
Neudorfer Foundation
Rebecca Neumann
William and Karen
Neumeister
Lyman and Steffany
Neuschaefer
Thi Cam Nguyen
David and Denise Nichols
Donna Nichols
Mary Nichols
Nico's Fund
Robert Niedbalski
Sheryl Nilson and
Mike Asplund
Janice Nishimori
Nisqually Indian Tribe
Jonathan Noll and
Martha Lentz
Grace A. Nordhoff
Linda Nordstrom
North Queens Drill Team
Northwest Breathalyzer Inc

Northwest Esthetics LLC
Northwest Multiple Listings
Norwescon
Darcy A. Nothnagle
Novelis Corporation
Novo Nordisk
Research Center
Maria Nulph
Kathy A. O'Connell
Sally K. O'Connor
Henry and Evelyn Odell
Timothy J. Oerting
Aaron Ogus
Donna O'Hara
Jeffrey Ojemann and
Karen Selboe
Paul and Margaret Olson
Olympic Tug and Barge
M. Emmett Omar
Jennifer O'Meara
Steven S. Omoto
OneHealthPort
Oppenheimer & Co. Inc.
Michael Orr and Robin Hruska
Ruben Ortega
Scott Osborne
Paul Osentowski
Jake Oshins
Robert and Georgia Osness
John and Mary Osterhaus

Michael Ott
The Overlake School
Scott and Jennifer Oxley
Pacific Crest Savings Bank
Pacific Market International
Pacific Northwest
Relocation Council
Donald and Sue Padelford
Janet Sue Painter
Gayle Palmer and Jerry Simon
James and Elizabeth
Papageorge
Paradigm Communications
Group
Paradoxes, Inc.
Rick Parducci
Parker Hannifin Foundation
Barbara Parker
Tanya and Anthony Paszkeicz
Lentz, Mark
Patterson Charitable
Foundation
Jeff Pattschull
Sara Paul
Paypal Charitable Giving Fund
PCL Construction
Services, Inc.
Amber Pearce
Nancy and Joseph Pearl
Kyle and Michele Peltonen

2002: Requests for emergency food aid increase by 19 percent. Nearly half of recipients are families with children. One in ten American households are food insecure.

2000



2006: Northwest Harvest secures more than 18 million pounds of food and distributes to 37 of 39 counties in Washington.



Raymond Penrose
Eugene and Patricia Pepper
Janine M. Perret
Darlene Peterson
Kurt and Celeste Peterson
Marcia D. Peterson
Sarah Peterson
PetroCard Systems Inc.
Mary Pettinger
Elizabeth Pfender and
William Clark
Philips Medical Systems
Phillips Law Firm
Personal Injury, PLLC
Alex Phillips
Joseph Phillips and
Mary Sebek
Mackenzie E. Phillips
Krista and John Phipps
Emily S. Pickering
Maureen Pitinga
Shahina Piyarali
Robert Platte and
Sharon Bailey
Philip B. Plattner
Theodore and Kim Plumis
Beth E. Plummer
Robert and Karen Plummer
Plywood Supply Inc.
Christa and Brian Poel

Judy and Harvey Poll
Michael and Rachel Popchuk
Porsche Club of America
- Pac NW Region
Port Blakely Tree Farms LP
Port of Seattle
Combined Fund
Kent Porter
Posner-Wallace Foundation
Darla Powell and Keith Smith
Jenifer Powell
Terry Prether and Kristin Stred
Daniel Price
Darcy and Donald Price
Christopher Prichard
Pride Foundation
John and Priscilla Privat
David Proctor
Property Inspector LLC
John and Sue Prueitt
Steven and Gloria Pumphrey
William H. Purdy
Donald Purrington
David and Patty Putnam
Kenneth Raedeke
Tina and Chip Ragan
Farzana Rahman
Rainier Welding Inc.
Merlin Rainwater and
Gregory Foster

Christina D. Ralph
Pamela Ramsey
Heather and John Ramseyer
Neetha Rao
Azin Rassaian
RC Construction Inc.
Reanier & Associates Inc.
Margot Reed
Diane and James Reeves
Region One Pacific
NW 4-Wheel
Mohammad Rehman
The Reiger Fund
Dale and Teri Summer-Reiger
David Reinhold
Dr. Lee A. Reinleitner
Daniel Reisinger
Joann Reiter
Rao
Richard and Sharon Reuter
Sigrid Reymond and
Erich Von Normann
James and Adele Reynolds
Carrie Rhodes
Andy Rich
Rick Steve's Europe Through
the Back Door Inc.
Randy Riffle
Barbara Rigelhof and
Benito Minicucci

Kathleen Riley
David and Celeste Rind
Kenneth Rines
Nancy Risser and Terry
D. Montgomery
Craig and Shelley Rixon
Russ and Jo Alene Roach
The Robbins Company
Carol and Irene Robbins
Janet L. Robbins
Gary and Ellen Roberts
Patrick and Marilyn Roberts
Ronald Roberts and
Sheila Lempka
Samantha Robertson
Craig and Jessica Robinson
Gerald Robinson
Scott Robinson
Rock's Consign Furniture LLC
The Rodman Foundation
Michael and Janice Roe
Robert and Susan
Roetcisoender
Paul Rogers
Isami Romanowski
Helene Romero
Alan and Lynn Weber
Roochvarg
Rossi Vucinovich PC
Nancy and John Rossmeissl

Shelley Rotondo and
John Hartman
RSM US Foundation
The RSW Foundation Inc.
Michael and Nancy Ruark
The Rubin Family Foundation
Ira and Beverly Rubinstein
Elmer and Crystal Ruehlmann
Anil Ruia
Carole and Richard Rush
Tove Ryman
Adam Sachs
Gene and Barbara Sackett
The Sadako K Judd Private
Foundation Inc.
Sadir Khan Grotto
Karleen N. Sakumoto
Jerret Sale and Rachel Klevit
James and Tracy Samuel
San Gennaro Foundation
- Seattle
Lavanya and Bhawana Sareen
Cathy Sarkowsky
Ron and Virginia Sather
Alicejo and Walter Saubert
Eileen Saunders and
Mark Weber
Robert and Leslie Savage
Ralph and Joan Saxton
Stefan N. Schackow

Adam and Catherine
Schaeffer
Frances and Thomas Scheidel
Melody and Tom Scherting
Stefan and Jutta Schmitt
James Schneidmiller
and Gina Vangelos
Richard and Mary Schober
Schoenfeld-Gardner
Foundation
Michael Schroer
Howard and Sheri Schultz
William Schulze and
Carol Hainline
Joseph Schwartz
M. Peter Scontrino, PhD
Maxwell and Judith Scott
Linda and Robert Scovel
Seattle Children's
Seattle Formosan
Christian Church
Seattle Genetics
Seattle Metropolitan
Credit Union
Seattle Water Polo
Association
Robert and Lawson Sebris
Tim and Debra Seeley
John and Dorcy Seethoff
SEI Giving Fund



*2007: An
estimated 35
million Americans
are food insecure.*



*2008: Northwest Harvest
opens a 94,000 square-
foot warehouse in Kent
which becomes the hub of
its statewide distribution.*

2008

Brian Selby
 Pisoot Senethavilay
 Keith and Lynnette Senzel
 Sequoyah Electric LLC
 Steve Serdy
 Darshana Shanbhag
 Anthony and Siri Shapiro
 Julie Shapiro and Shelly Cohen
 Richard and Judith Shaw
 Tim Shaw
 David B. Shema
 Shephard Comm
 Real Estate LLC
 Myrna and Robert Sherman
 Joseph and Barbara Shickich
 Shields Bag and Printing Co.
 Kimberly and Ray Shine
 Paul and Patricia Shipman
 Shoalwater Bay Indian Tribe
 Shortlidge Charitable Trust
 Susan Shortreed
 Shorty's
 Janet and Michael Showalter
 Robert and Cynthia Shurtleff
 Seth Siegal and Mary Doherty
 James E. Siegle
 Karl and Susan Sifferman
 Silicon Valley Community
 Foundation
 The Silver Foundation

Melvyn Simburg
 Nicholas and Jaclyn Siska
 Sisters of St Joseph of Peace
 Murali and Gouri Sivarajan
 Skokomish Indian Tribe
 Craig and Chris Slye
 Gerald R. Smith
 Gregory Smith
 James and Margaret Smith
 Kevin and Karen Smith
 Lynn Smith
 Marsha and Larry Smith
 G. Mark Snapp
 Andrew Snelling
 Lilyan and Donald Snow
 Leah Snyder
 Sodexo Foundation Inc.
 Mr. and Mrs. Soikowski
 Solid Ground Washington
 Elizabeth Solomon
 Kenneth and Amy Sommers
 Dawna Sorrell
 Diane and Michael Soules
 Sound Transit
 Jennifer and James Southwell
 Richard Sowell
 David Spalding
 Allen and Conny Spann
 Dawnelle and Ronald
 Spaulding

Edwin and Diane Spaunhurst
 Jerry Spigal
 Ted Spitalnick
 Mark Spitzer
 Mr. and Mrs. Springer
 Robert Springer
 Squaxin Island Tribe
 General Account
 Manoj Srivastava
 St. Margaret's
 Episcopal Church
 Robert H. Stack
 Chris P. Staehli
 Gerald Stanley
 Ann L. Stedronsky
 Alexander and Jane Stevens
 Ann A. Stevens
 Prof. Brent K. Stewart
 Kim Stocking
 James Stofer
 Stokes Lawrence, PS
 Sue-Erin Stone
 Derek W. Storm
 Carol and Donald Straight
 Wayne and Pauline Strong
 William Strong
 Lisa Studeman
 Studio 904
 Minna Suh
 Michael Sullivan

R. R. and Pendleton Sullivan
 Todd and Jane Summerfelt
 Sustainable Solutions
 Foundation
 Stuart and Alison Swanberg
 Michael Sweeney
 Ed and Sharon Sweo
 Virginia P. Sybert
 Symetra Matching Program
 Richard Szeliski
 Nancy Szpara
 T3 Custom
 Tableau Software
 David and Dana Taft
 Eileen Takeuchi and
 Donald Rapp
 Sharon and James Takeuchi
 Alison and Jeff Talbot
 Darren Tanner
 Patricia Taylor
 Steven and Jennifer Taylor
 Matthew Teasley
 Steve and DeYonne Tegman
 Michael and Judith Tembreull
 Terra Associates Inc.
 Devon Thagard
 Rachel and Chris Thibodeaux
 Carol A. Thomas
 David and Carol Thomas
 Lisa A. Thomas

Valrie Thomas
 Virginia and George Thomas
 Sally Thomson
 Kellie R. Thorne
 Jeanne Thorsen and
 Tom Mayer
 Mark and Arlene Tiberghien
 Nico's Other Fund at
 Tides Foundation
 Gregory and Carol Ann Tillitt
 Gary and Maria Tober
 Gerald and Debbie Tonkovich
 Patricia Tonsgard
 David Tookey and M.
 Michelle Noland
 John Q. Torode
 TOSA Foundation
 Leanna Towell
 Trade Printery
 Jim Traner
 Ambrose and Patricia Treacy
 Trident Seafoods Corporation
 Cassandra Trimble
 Leslie and Ian Tubbs
 Eric Tuch
 Judith Tucker
 Susan Tucker and Brian
 Schilling-George
 Dennis Tully
 James and Katherine Tune

Michael Ty
 U.S. Charitable Gift Trust
 Carl Ulberg
 United Association
 of Plumbers and
 Pipefitters Local 32
 Linda Urquhart
 Chad and Tina Urso McDaniel
 Maarten Van Dantzich
 and Sarah Gunter
 Michael VanBemmel
 William and Donna VanBuren
 George and Mavis Velikanje
 Kimm Viebrock and
 Michael Nesteroff
 Rachel Vigil
 Carlos Vijarro
 Jerry and Gail Viscione
 Dr. Arthur and Harriet Vogel
 Ernest Vogel and
 Barbara Billings
 Trevor Vossen
 Betty L. Wagner
 Greg Walker
 Jeffrey Walker
 Robert and Teresa Walker
 Walker's Furniture Inc.
 Michael Wallent and
 Anh Hoang
 Richard and Leslie Wallis

2008-09: A nationwide recession causes record numbers of people to turn to their local food programs for assistance.



Steve and Kristal Wallstrom
Michael and Martha Walsh
Richard D. Walter
Sin-Yaw Wang
Irene Ward
Richard and Linda Ward

Washington Machinists
Council
Washington State Food
& Nutrition Council
Washington Women's
Foundation



David Watkins
Cecilia and Gerald Watson
Jason Weill
Edward Weinberger
and Kathy Bloomer
Richard S. Weiner
Robert and Julia Weir
Ms. Sarah Weiser and
Mr. Manny Weiser
Barbara and Eric Weissman
Wells Fargo Community
Support Campaign
Wenaweser Foundation
Western Governors University
Western States Asphalt
Michael Whalen
Kathryn Wharry
Glen White
The Whitehead Company Inc.
Whitepages.com Inc.
David and Barbara Whitney
Keith Whittemore
Cheryl Wichers
Lowell C. Wickman
Roger G. Wickstrom
Donald and Mary Wiekowicz
Randy and Dawn Wiedmeier



Alexander Wilkins
Mark Wilkins and Katy
Wilkins Haigh
William W. Kilworth
Foundation
Allan Williams and
Susanne Keller
Kelli Williams
Deborah A. Wilson
Ms. and Mr. Joann Wilson
Richard G. Wilson
Craig Winans and Janis Horike
Shanis Windland
Lanta and Greta Wine
Matthew Winkler
Jane Winn
David Witham

Wold Family Foundation
Amber Wong
Che and Jason Wong
Jonathan and Erin Woods
Andrew Wright
Daniel and Jill Wright
Frank Yandrasits
Robin and Bryan Yim
Judith Young
Sharon Young
Young's Market
Company - Oregon
Kim Zabora
Richard Zahniser
Alan Zarky and Helen Halpert
Ye Zhang
Greg Zimlich
Robert and Diane Zormeir
Benjamin and Suzanne Zorn

Major Food and In-Kind Donors

American-Canadian Fisheries
California Assoc. of Food Bank
Chateau Ste. Michelle
Costco Wholesale

Darigold Incorporated
Del Monte Foods
Dr. Pepper Snapple Group
Easterday Farm Produce
Farmer Bean & Seed LLC
FC Bloxom Produce
Feed The Children
Google
Herbivore Botanicals LLC
Holland America Line
Inaba Produce Farms, Inc
Keystone Fruit Brokerage
Legacy Fruit Packers LLC
Leslie Fund Inc.
Midwest Food Bank
National Products, Inc.
Niagara Bottling LLC
PACCAR Inc.
Pacific Coast Fruit Company
Pacifipro Inc
Resers Fine Food
Rotary First Harvest
Tiffany & Company
WA State Dept of Agriculture
WalMart

2009: Northwest Harvest returns to its social justice roots with renewed dedication to advocacy work and the hire of a public policy manager.

2009

2010: Northwest Harvest opens warehouse in Spokane to improve access for Eastern Washington partners.

Event Sponsors & Media Partners

Special thanks to all the supporters, sponsors, and donors that made our Root Out Hunger 50th event such a success. Please see pages 16-17 for the full event roster.

Academy Schools
Alaska Airlines
Amazon.com
Anchor Brewing Co.
Apex Media
Doug Baldwin & Pho Shizzle
Banner Bank
Bear Trade Show Services
Bellevue Brewing Company
Bluegrass & Beer Festival
CBS Radio
CenturyLink
Coastal Farm & Ranch
Crème Tangerine
Crosscut
Domex Superfresh Growers
Dunn Lumber
Everett Mall

F5 Networks Inc.
FBI Agents Association
First Fruits of Washington LLC
Ford Motor Company Fund
Fred Meyer
Full Circle
Heart to Heart Farm
HomeStreet Bank
KCTS TV
KHQ Inc.
KIMA TV
KING Television
KNDO/KNDU TV
KNKX FM
KOMO TV
KZOK FM
Landau Associates Inc.
National Frozen Foods Corporation
Negative Split
Northgate Mall
Northwest Grocers
Pacific Northwest University of Health Sciences
Radio Yakima
Redmond Town Center
Safeway, Inc.



Seattle Chocolates
The Seattle Foundation
Seattle Gay News
Seattle Magazine
Seattle Mariners
Seattle Refined
Seattle Seahawks
Seattle Singles Yacht Club & Ballard Elks Lodge #827
Seattle Theater Group
Seattle's Last Waltz
Siemens Industry Inc.
The Stranger
Tacoma Mall
Tacoma Rainiers
Top Pot Doughnuts
Townsquare Media Yakima

Trans-Siberian Orchestra & Live Nation Music Group Inc.
Tree Top
US Bank
Washington Bankers Association
Washington Dairy Council
Wine Yakima Valley
George Winston & Benaroya Hall
WSECU-Yakima
Yakima Valley Museum

We make every effort to ensure the information contained in this report is accurate and complete. To request a correction, please contact info@northwestharvest.org.



2016: 1 In 8 Washingtonians are hungry.
2017: Northwest Harvest announces goal to cut hunger in half in Washington by 2028.

2017



PARTNER PROGRAMS

Current as of Nov. 1, 2017

ADAMS COUNTY

Othello Food Bank
Ritzville Food Pantry

ASOTIN COUNTY

Asotin County Food Bank
St. Vincent de Paul Food
Pantry - Clarkston

BENTON COUNTY

Harvest Outreach Food Bank
Tri-Cities Benton City
Food Bank
Tri-Cities Kennewick Food Bank
Tri-Cities Richland Food Bank

CHELAN COUNTY

Cashmere Ministerial
Cashmere Food Bank
Community Cupboard - MEND
Entiat Valley Community
Services Food Bank
Lake Chelan Food Bank
SAGE
Saint Vincent de
Paul - St. Joseph
Wenatchee Food Bank

CLALLAM COUNTY

Makah Food Bank
New Hope Food Bank
Port Angeles Food Bank
Quileute Food Bank
Sequim Food Bank

CLARK COUNTY

Battle Ground Adventist
Community Services
Clark County Adventist
Community Services
FISH of Orchards
FISH of Vancouver

Inter-Faith Treasure House
Martha's Pantry
Neighbors Helping Neighbors
North County Community
Food Bank
Trinity Mission Cupboard

COWLITZ COUNTY

Castle Rock Lions Food Bank
Faith Center Food Bank
FISH of Cowlitz County
Kalama Helping Hand
Saint Vincent de
Paul - Longview
Woodland ACTION Center

DOUGLAS COUNTY

Bridgeport Community
Food Bank
Mansfield Food Bank
Orondo Food Bank
Rock Island Food Bank
Waterville Food Bank

FERRY COUNTY

Orient Food LINC
People's Pantry

FRANKLIN COUNTY

Basin City Help Services
Golden Age Food Share
Pasco Community Services
St. Vincent De Paul - Pasco
Union Gospel Mission Tri-Cities*

GARFIELD COUNTY

Garfield County Food Bank

GRANT COUNTY

Moses Lake-Larson Heights
Moses Lake-Midway
Elementary**

Moses Lake-North
Elementary**
Community Services
of Moses Lake
Ephrata Food Bank
Mattawa Area Food Bank
Quincy Community Food Bank
Royal City Food Bank
Soap Lake Food Bank

GRAYS HARBOR COUNTY

Aberdeen Avenue
Baptist Church
Aberdeen Community
Food Bank
Adventist Community
Services of Grays Harbor
BASH of Washington
Coastal Harvest Mobile
Food Bank
Copolis Community
Church Food Bank
East Grays Harbor
County Food Bank
Hoquiam Food &
Clothing Bank
Hoquiam-Central
Elementary**
Hoquiam-Lincoln
Elementary**
Humptulips Food Bank
Lord's Pantry
Malone Food Bank
McCleary Food Bank
Montesano Food Bank
Oakville Food Bank
Ocean Shores Food Bank
Quinault Community
Food Bank
Salvation Army - Aberdeen

South Beach Food
Bank Services

ISLAND COUNTY

Gifts From the Heart
Food Bank
South Whidbey Good Cheer

JEFFERSON COUNTY

Brinnon Food Bank
Hoh Tribal Food Bank
Port Townsend Food Bank
Queets Food Bank
Quinault Tribe
Quilcene Food Bank
Tri-Area Food Bank

KING COUNTY

Adra Berry Memorial
Food Bank
Algona/Pacific Food Pantry
Aloha Inn*
Asian Counseling &
Referral Services
Auburn Food Bank
Ballard Food Bank
Bothell Community Kitchen*
Cathedral Kitchen*
Centerstone
Chicken Soup Brigade
Chief Seattle Club*
Community Lunch
on Capitol Hill*
Des Moines Area Food Bank
DESC - Eastlake*
DESC - Evans House*
DESC - Rainier House*
DESC - Union Hotel*
El Centro De La Raza
Food Bank
Eloise Cooking Pot
Fall City Community
Food Pantry
Family Works Food Bank
FSWP Bailey Gatzert
FSWP Highland Park

Highline Area Food Bank
Highline-Beverly Park
Elementary**
Highline-Cascade Middle School**
Highline-Hazel Valley
Elementary**
Highline-Mount View
Elementary**
Highline-Southern Heights
Elementary**
Highline-White Center
Heights Elementary**
Hopelink Bellevue
Hopelink Kirkland
Hopelink Redmond
Hopelink Shoreline
Hopelink Sno-Valley
Hunger Intervention Program*
Immanuel Community
Services Food Bank
Issaquah Food & Clothing Bank
Jewish Family Service
Kent - Springbrook
Elementary**
Kent Elementary School**
Kent-Daniel Elementary**
Kent-East Hill Elementary**
Kent-Meadow Ridge
Elementary**
Kent-Millennium
Elementary**
Kent-Pine Tree Elementary**
Kent-Scenic Hill Elementary**
Latino Hot Meal*
Maple Valley Food Bank
& Emergency Services
Margie Williams
Helping Hands
Mary's Place*
Millionaire Club*
Mt Si Helping Hand Food Bank
Multi-Service Center
Noel House*
North Helpline Bitter Lake
North Helpline Food Bank

Operation Nightwatch*
Operation Sack Lunch*
Ozanam House*
Paradise of Praise Food Bank
Phinney Ridge Lutheran
Chur Food Bank
Pike Market Food Bank
Pike Market Senior
Center Meals*
Plateau Outreach Ministries
Providence Regina House
Puget Sound Labor Agency
Rainier Valley Food Bank
Recovery Cafe*
Renewal Food Bank
ROOTS Shelter & Friday Feast*
Saint Vincent de Paul -
Georgetown
Saint Vincent de Paul -
South King County
Salvation Army - Renton
Seattle Indian Center
Food Bank
Snoqualmie Valley Food Bank
St. Martin's on Westlake*
SW Boys & Girls Club
King County*
The Food Bank @ St. Mary's
The Wintonia*
Tukwila Pantry
Union Gospel Mission Seattle*
University District Food Bank
Vashon-Maury Comm.
Food Bank
West Seattle Food Bank
White Center Food Bank
YWCA Angeline's Center*
YWCA - Central Area Food Bank

KITSAP COUNTY

Bremerton Foodline
Central Kitsap Food Bank
Helpline House
Lord's Neighborhood Diner*
North Kitsap Fishline

Port Gamble S'Klallam
Food Bank
Saint Vincent de Paul - Bremerton
Sharenet Food Bank
South Kitsap Helpline

KITTITAS COUNTY

Apoyo
FISH of Ellensburg
HopeSource Food Bank

Klickitat County

Goldendale Food Bank
Ol' Mill Food Bank
WA Gorge Action Programs

LEWIS COUNTY

Greater Chehalis Food Bank
Hub City Mission Food Bank
HUB City Mission Meal Program*
Mineral Neighborhood Center
Pastor's Pantry
Pe Ell Community Food Bank
Salvation Army - Centralia
SOMMA Food Bank
Toledo Food Bank
White Pass Comm. Food Bank
Winlock-Vader Food Bank

LINCOLN COUNTY

Care & Share - Grand Coulee
Care & Share - Lincoln County
Harrington Food Bank
Sprague Horizons
Community Food Bank

MASON COUNTY

Community Food Pantry
Hood Canal Food Bank
Matlock Food Bank
North Mason Coalition of
Churches and Community
North Mason Coalition of
Churches and Community*
Saints Pantry Food Bank
Squaxin Island Tribe Food Bank

OKANOGAN COUNTY

Brewster Food Bank
Colville Confederated
Tribes Food Bank
Conconully Food Bank
Okanogan Food Bank
Omak Food Bank
Oroville Food Bank
The Cove
Tonasket Food Bank
Wauconda Food Bank

PACIFIC COUNTY

Chinook Food Bank
His Supper Table*
Legacy Community
Outreach Food Bank
North County Pacific
Co. Food Bank
North River Food Bank
Ocean Park Food Bank
Shoalwater Bay Food Bank
St. Vincent de Paul -
Ilwaco Food Bank

PEND OREILLE COUNTY

Cusick Food Bank
Emergency Food Bank of Ione
Newport Food Bank

PIERCE COUNTY

Allen Food Pantry
Bonney Lake Food Bank
Edgewood Comm.
FISH Food Bank
Families Unlimited
Network Food Bank
Graham South Hill
FISH Food Bank
Key Peninsula Bischoff
Food Bank
Lakes Area FISH Food Bank
Lakewood-Four Heroes
Elementary
Lakewood-Lakeview
Hope Academy

Lakewood-Tyee Park
Elementary**
My Sister's Pantry
Nourish Pierce County
NW Tacoma FISH Food Bank
Orting Food Bank
Puyallup Food Bank
Sea Mar Adult Treatment*
Southeast Nourish
St. Leo's Food Connection
Sumner Community
Food Bank
Tacoma Adventist
Community Services
Tillicum American Lakes CSC

SAN JUAN COUNTY

Orcas Island Food Bank

SKAGIT COUNTY

Alger Food Bank
Bread of Life - Marblemount
Clear Lake Community
Covenant Church
& Food Bank
Concrete Food Bank
Hamilton Community
Food Bank
Helping Hands Food Bank
La Conner Sunrise Food Bank
Mobile Food Express,
Skagit CAP
Shepherd's Heart Care Center
Skagit Friendship House*
Skagit Valley Neighbors in Need
Swinomish Tribal Food Bank
Tri-Parish Food Bank

SKAMANIA COUNTY

Stevenson Food Bank

SNOHOMISH COUNTY

Carol Rowe Memorial
Edmonds Food Bank
Cascade Boys & Girls Club*
Concern for Neighbors
Food Bank

Everett Boys & Girls Club*
Granite Falls Food Bank
Interfaith Association
of NW WA*
Lynnwood Food Bank
Marysville Community
Food Bank
Seeds of Grace
Sky Valley Food Bank
Snohomish Community
Food Bank
Tulalip Food Bank
Volunteers of America - Everett
Volunteers of America -
Mill Creek Food Bank
Volunteers of America -
South Everett Food Bank
Volunteers of America - Sultan
Volunteers of America - Wetmore
Westgate Chapel Food Bank

SPOKANE COUNTY

All Saints Food Pantry
All Saints Soup Kitchen*
Caritas Outreach Ministries
East Central Community Center
East Valley Baptist Church FP
Greenhouse Community Center
House of Charity*
New Hope Ranch Food Bank
New Hope Ranch*
North County Food Pantry
Northeast Food Pantry
Our Place Community
Ministries
Salvation Army Spokane Corps
Serve Spokane Food Pantry
Shalom Ministries*
Spokane Valley Partners
Food Bank
Spokane-Bemiss Elementary**
Spokane-Grant Elementary**
Spokane-Holmes Elementary**
Spokane-Lidgerwood
Elementary**

Spokane-Logan Elementary**
Spokane-Longfellow
Elementary**
Spokane-Stevens Elementary**
Spokane-Whitman
Elementary**
Volunteers of America -
Crosswalk*
Women's & Children's
Free Restaurant*

STEVENS COUNTY

Addy Rescue Mission
Chewelah Food Bank
Ford Food Pantry
Hunters Food Bank
Kettle Falls Community Chest
Loon Lake Food Bank
Northport Food Bank
Spokane Tribe Food Bank
Tum Tum Community
Food Pantry
Valley Food Pantry
VFRC - Colville Food Bank

THURSTON COUNTY

ROOF Community Services
Tenino Food Bank Plus
Thurston County Food Bank
Yelm Community Services

WAHAKIUM COUNTY

Wahkiakum Helping Hands

Walla Walla County
Blue Mountain Action
Council Food Bank
Pantry Shelf of Walla Walla

WHATCOM COUNTY

Bellingham Food Bank
Blaine Food Bank
Ferndale Food Bank
Foothills Food Bank
Lummi Nation Food Bank
Nooksack Tribal Food Bank
Nooksack Valley Food Bank

Point Roberts Food Bank
Project Hope Food Bank

WHITMAN COUNTY
Council on Aging & Human
Services Food Bank

YAKIMA COUNTY

Adams Elementary**
Barge Lincoln Elementary**
Fairview SDA Food Bank
Garfield Elementary
Grandview SDA Food Bank
Granger Food Bank
Highland Food Bank
Hoover Elementary**
Martin Luther King Jr
Noah's Ark*
OIC of WA Food Bank
People for People*
Ridgeview Elementary**
Rod's House*
Selah Food Bank
SOC Mabton Food Bank
SOC Soup Kitchen*
SOC Sunnyside Food Bank
SOC Wapato Food Pantry
SOC Yakima Our Daily
Bread Food Bank
St. Michaels Food Pantry
Sunnyside ACS Food Bank
The Pantry at Moxee
Toppenish Community Chest
Toppenish-Garfield
Elementary**
Toppenish-Kirkwood
Elementary**
Toppenish-Lincoln
Elementary**
Toppenish-Valley View
Elementary**
Washington Middle School**
White Swan Comm Food Bank
Yakima Rotary Food Bank
Yakima SDA Food Bank
Zillah Food Bank

OUR FAMILY



BOARD OF DIRECTORS 2017-18**OFFICERS**

DIANA AXNESS, Chair
Community Volunteer

IRENE WARD, Immediate Past Chair
*Catholic Community Services
of Western WA*

DWIGHT RIVES, Treasurer
Port of Seattle

CRIS HALES, Secretary
Tree Top, Inc

DIRECTORS

NEAL BOLING
KHQ-TV

KATHY BROWN
Community Volunteer

JOYCE CAMERON
Providence Health Care Foundation

CONNIE FALON
Miller & Assoc. Wealth Management

JEFF GRANT
UPS

TIM GROVES
The Boeing Company

SASA KIRKPATRICK
Community Volunteer

SCOTT MCQUILKIN
Whitworth University

BRANDON PEDERSEN
Alaska Air Group

MIKE REGIS
Community Volunteer

JAN STILL
Social Security Administration



Hunger isn't just the absence of food—it's the absence of justice.

Northwest Harvest is focused on changing the conversation on solving hunger here at home—from a model based on charity to one rooted in social justice. In addition to making sure that those who suffer from hunger are being fed, we aim to shift public opinion, as well as impact institutional policies and societal practices that perpetuate hunger and poverty in our state.

We thank you for joining us in making a difference by donating, volunteering, and raising your voice.

Together, we can solve hunger in Washington.



P.O. Box 12272
Seattle, WA 98102
800.722.6924
northwestharvest.org

We gratefully acknowledge the support of TCC Printing & Imaging in the production of this publication.